

artos[®]

TS071

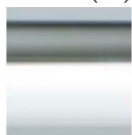
TECHNICAL SPECIFICATIONS

trova thermostatic
shower set with handheld

BRUSHED NICKEL(BN)



CHROME(CH)



BLACK(BK)



artos[®]

TS071

OPERATING SPECIFICATIONS

trova thermostatic
shower set with handheld



FEATURES

Solid Brass
2-Outlets

INCLUDES

Valve-Trim

OPERATING PRESSURE

Minimum: 15 psi
Maximum: 125 psi
Above 90psi it may be necessary to install a pressure reducer

OPERATING TEMPERATURE

Maximum: 176°

FLOW CAPACITY

Shower Head: 1.8 USGPM

STANDARDS

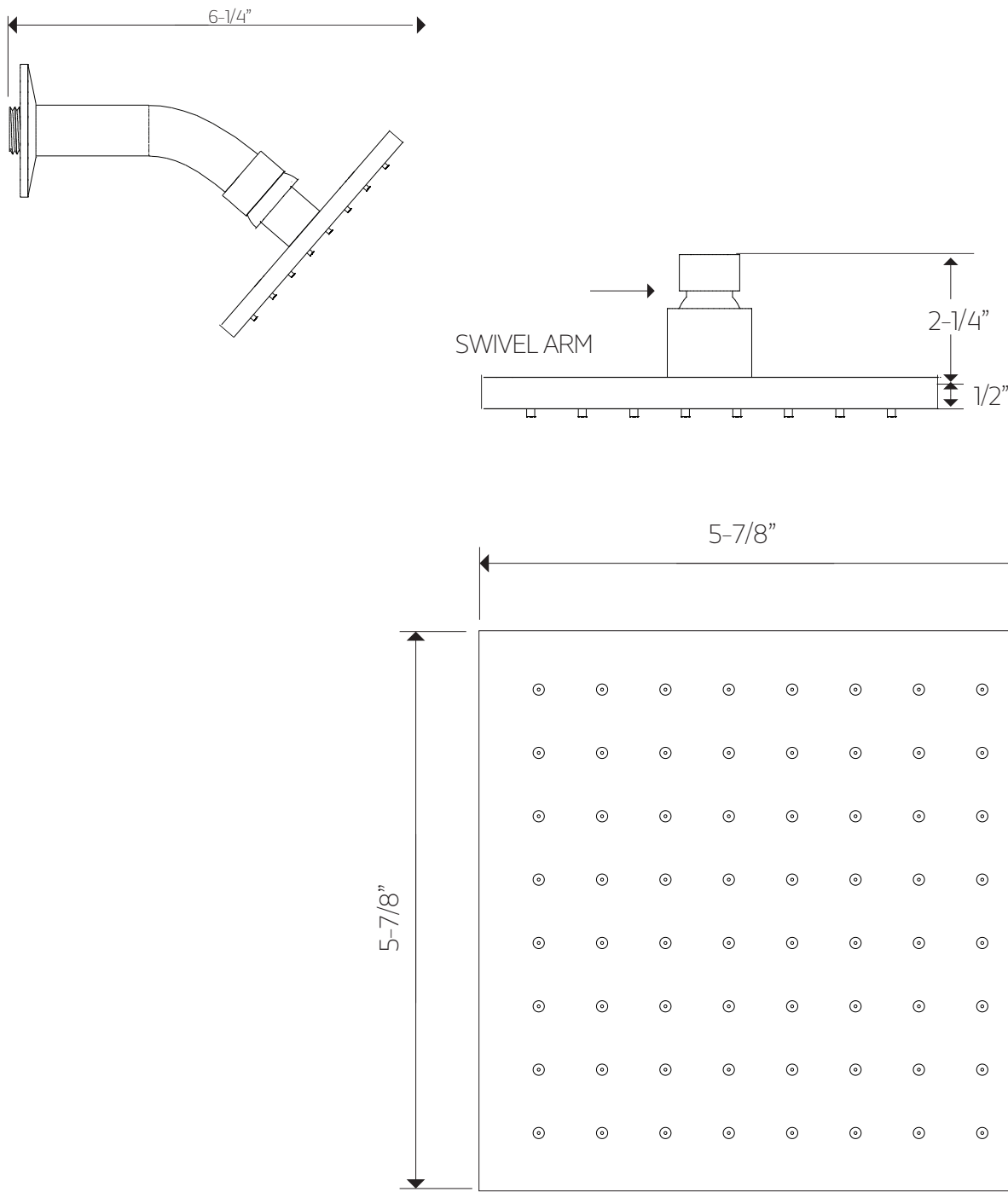
ASSE 1016-2011 | ASME_A112.1016-2011 | CSA B125:16-11



TS071

PRODUCT DIMENSIONS

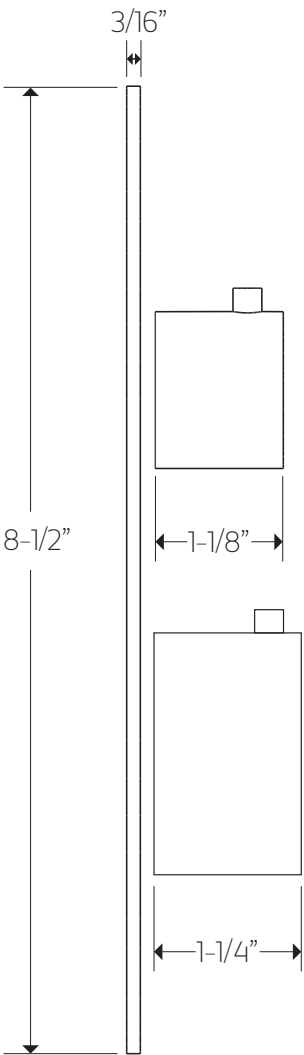
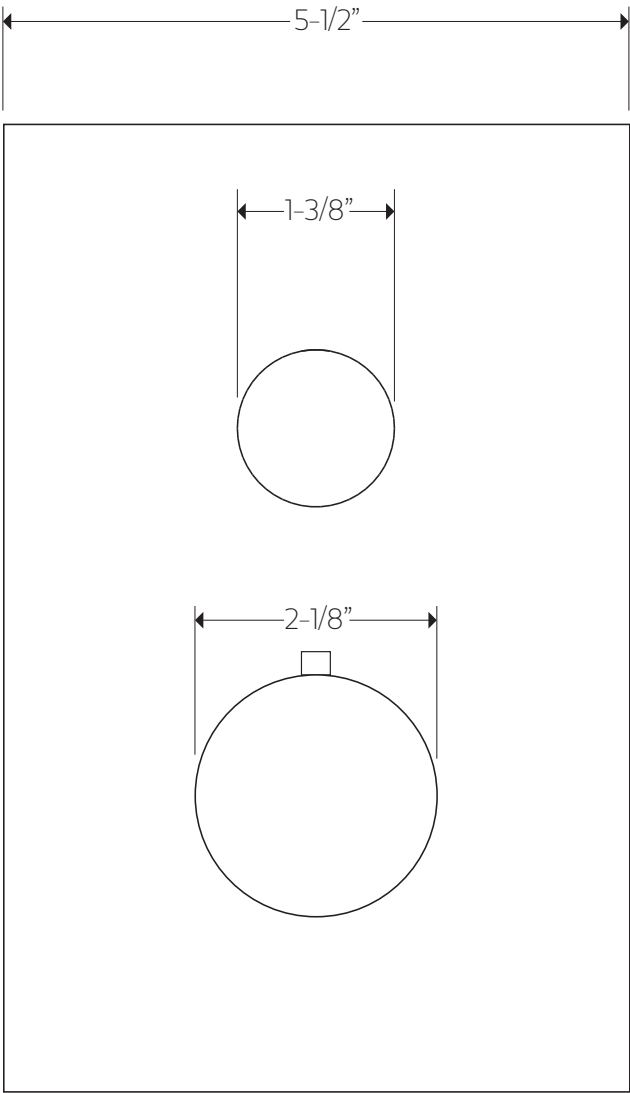
trova thermostatic
shower set with handheld



TS071

PRODUCT SPECIFICATIONS

trova thermostatic
shower set with handheld

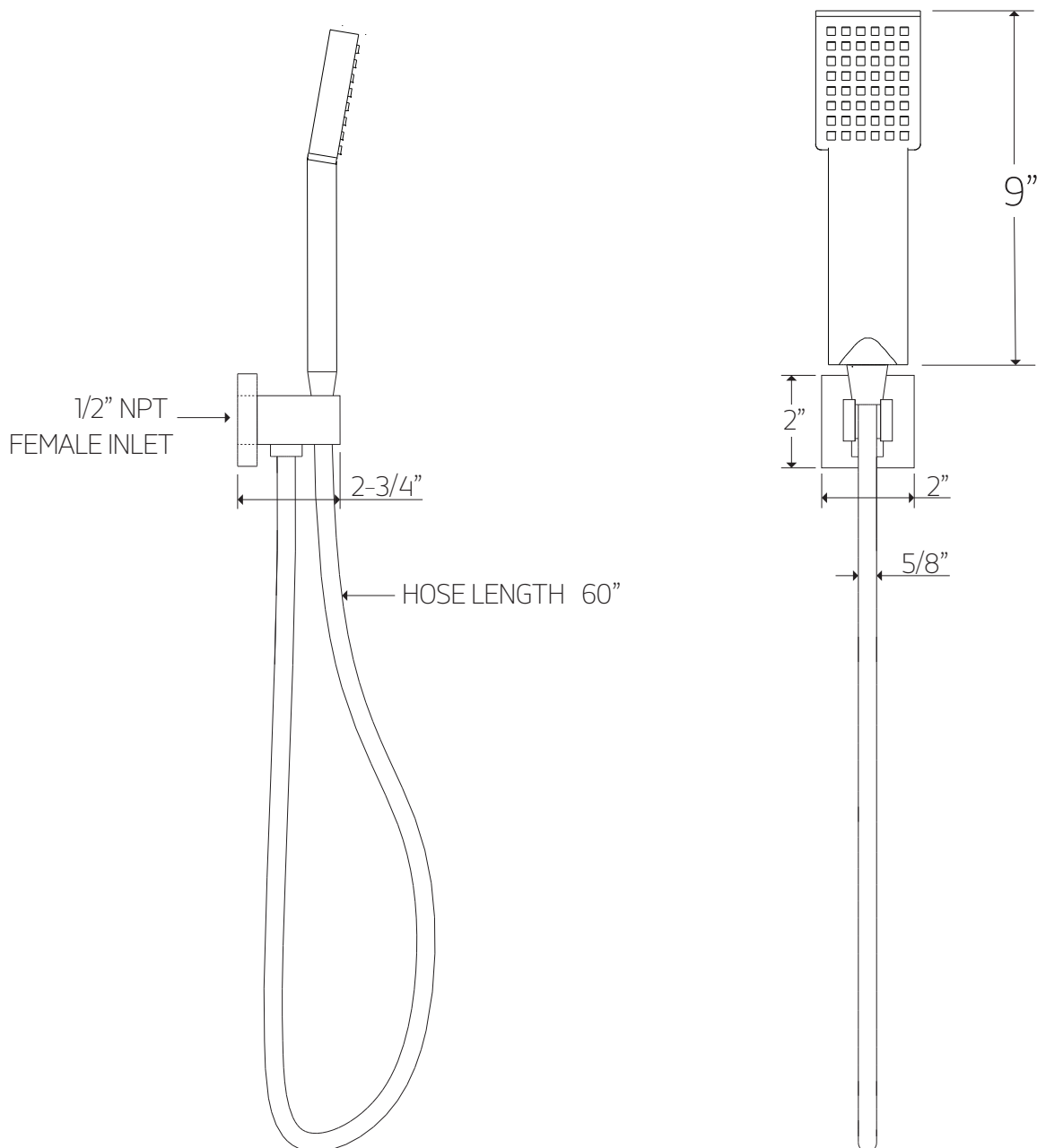


artos[®]

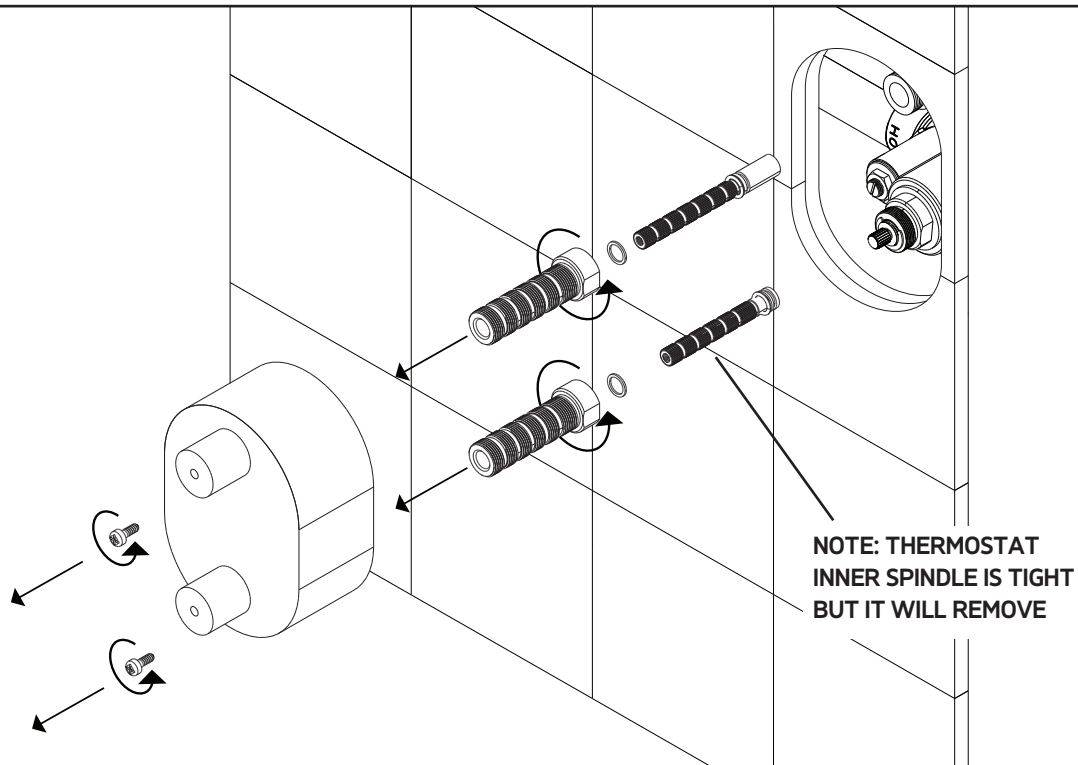
TS071

PRODUCT SPECIFICATIONS

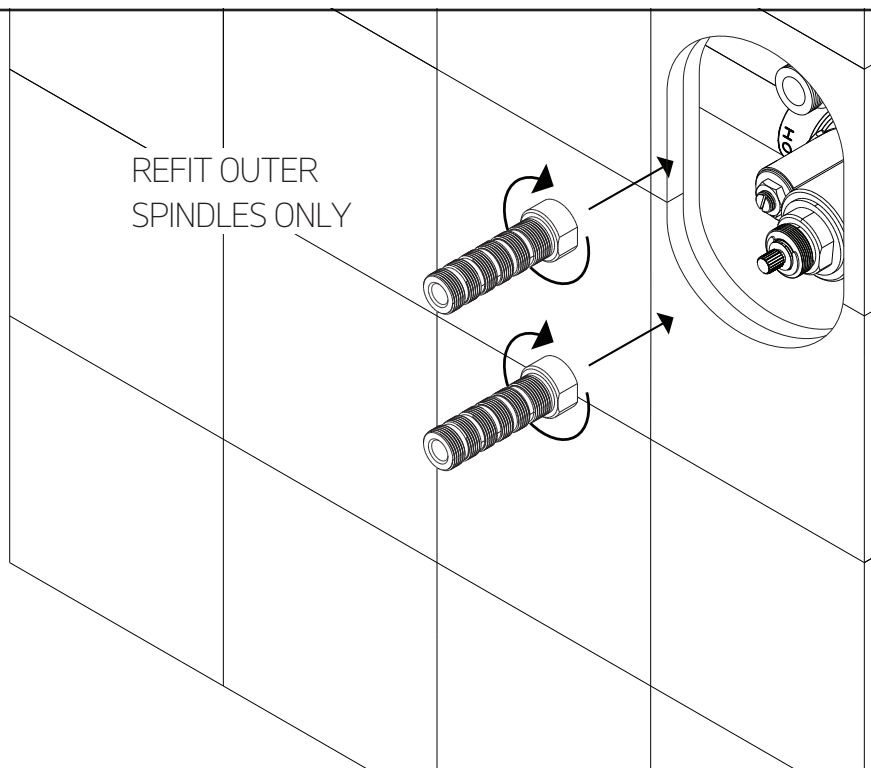
trova thermostatic
shower set with handheld



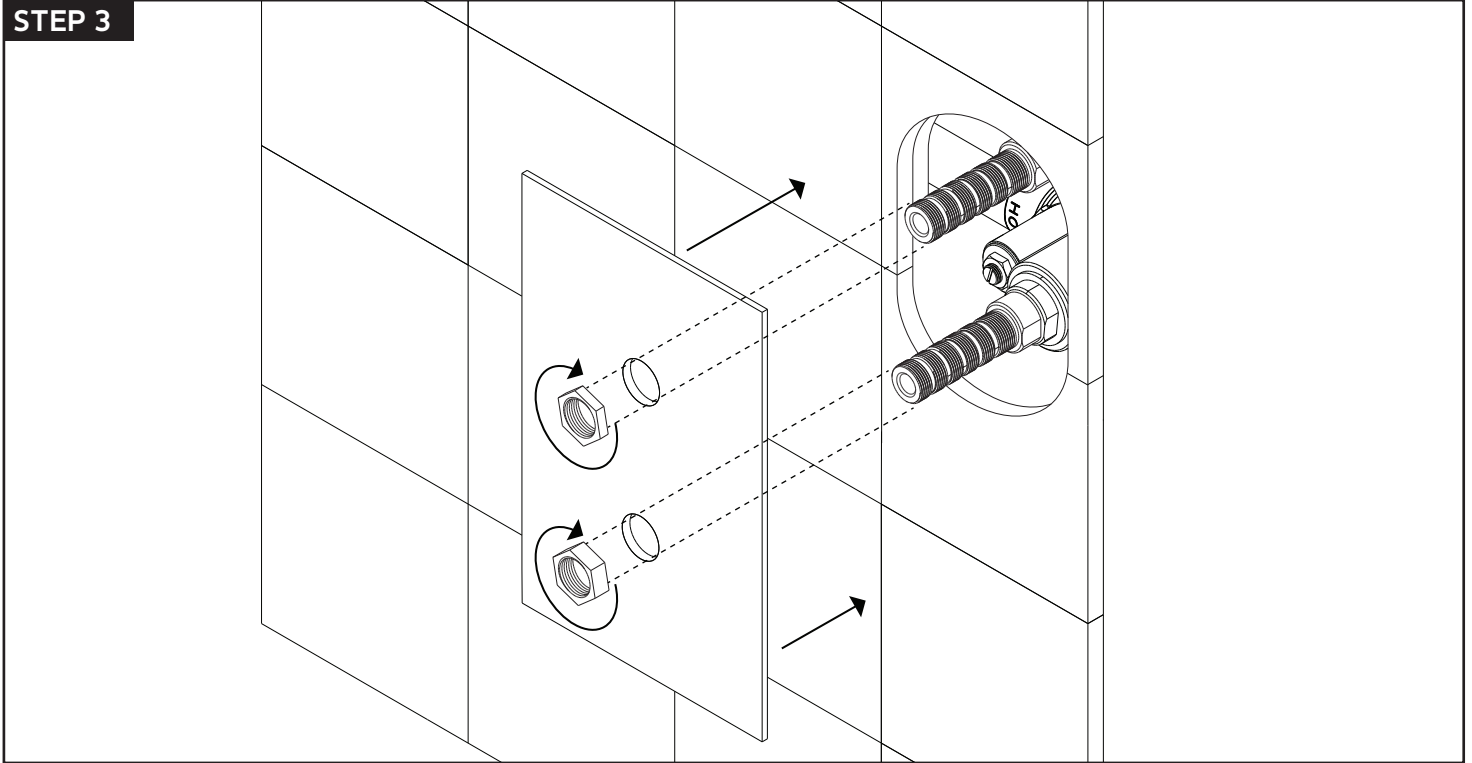
STEP 1



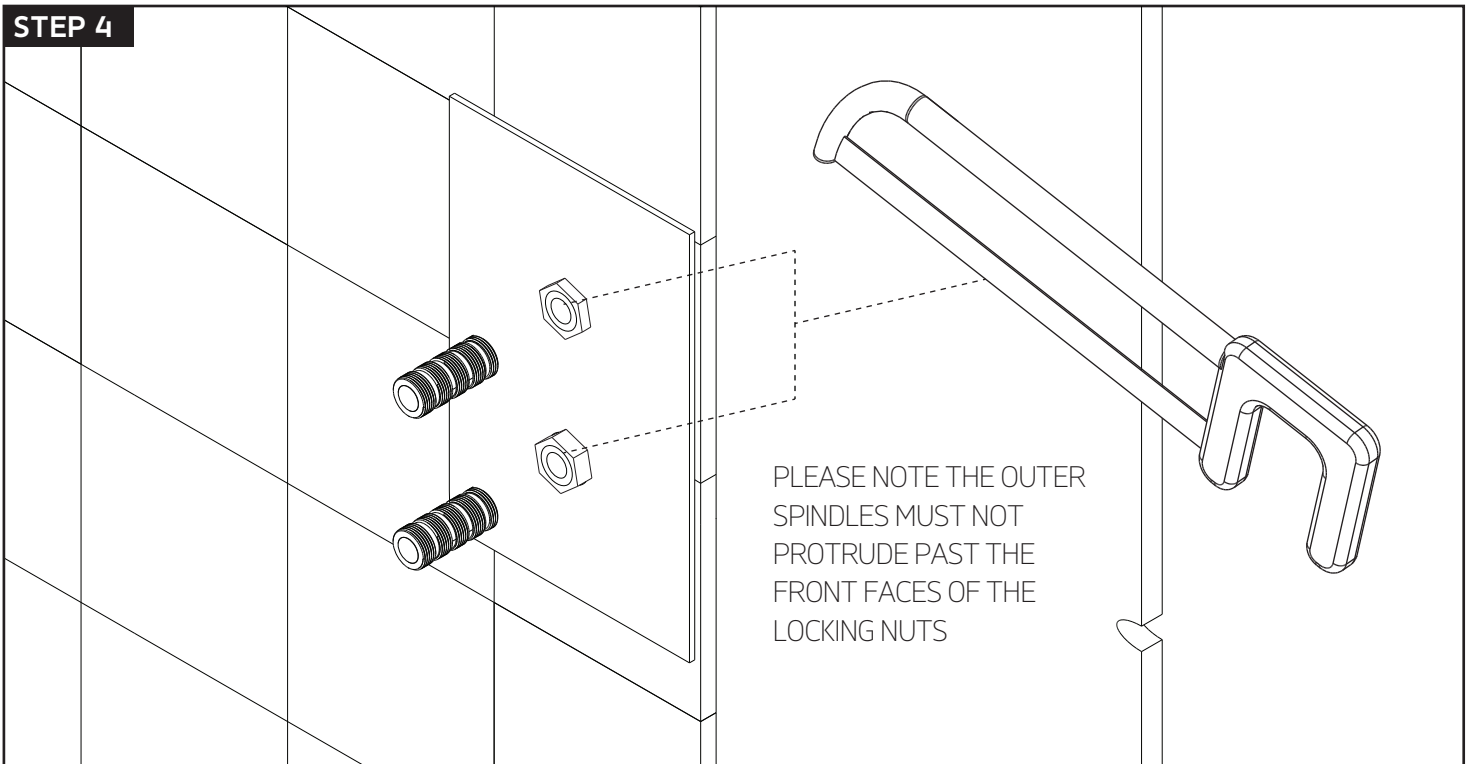
STEP 2



STEP 3



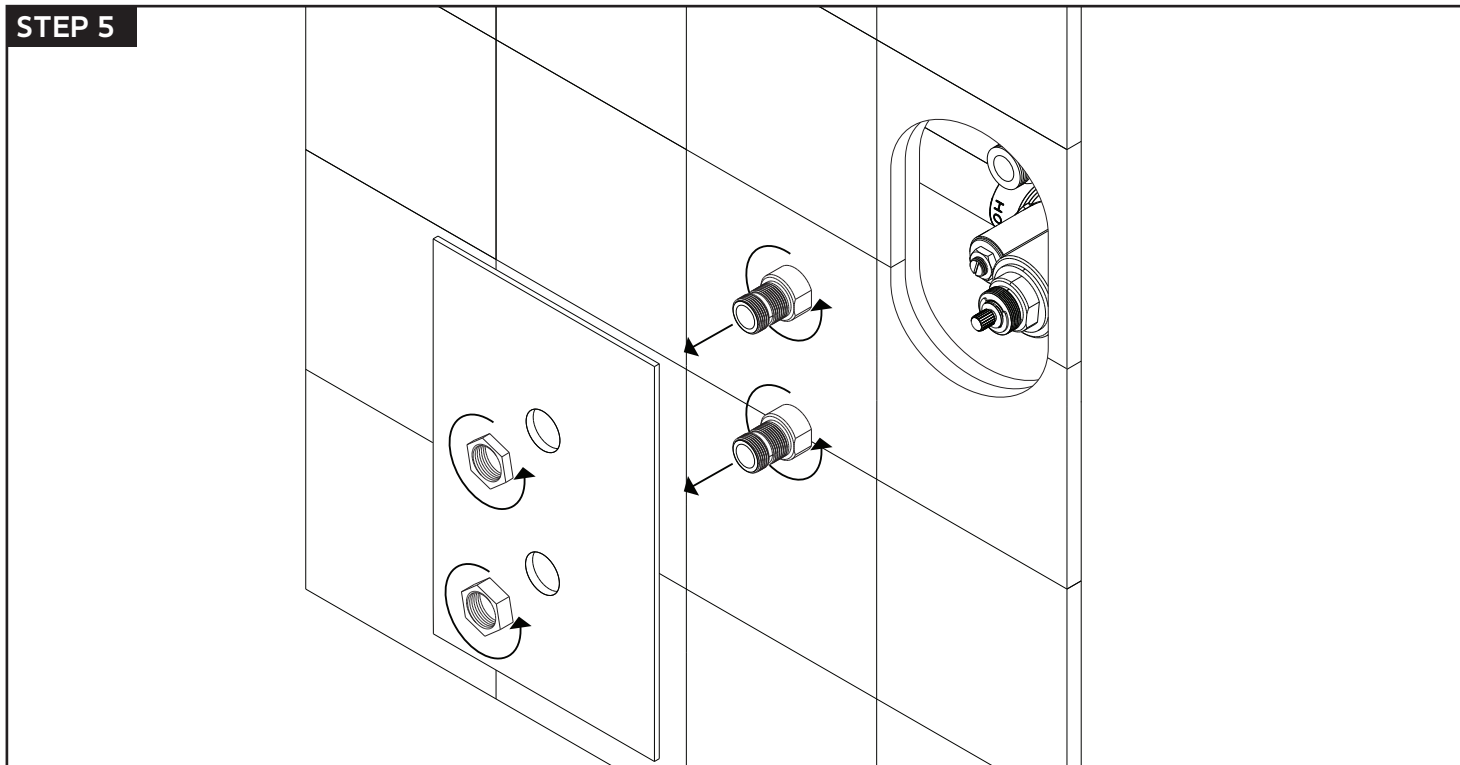
STEP 4



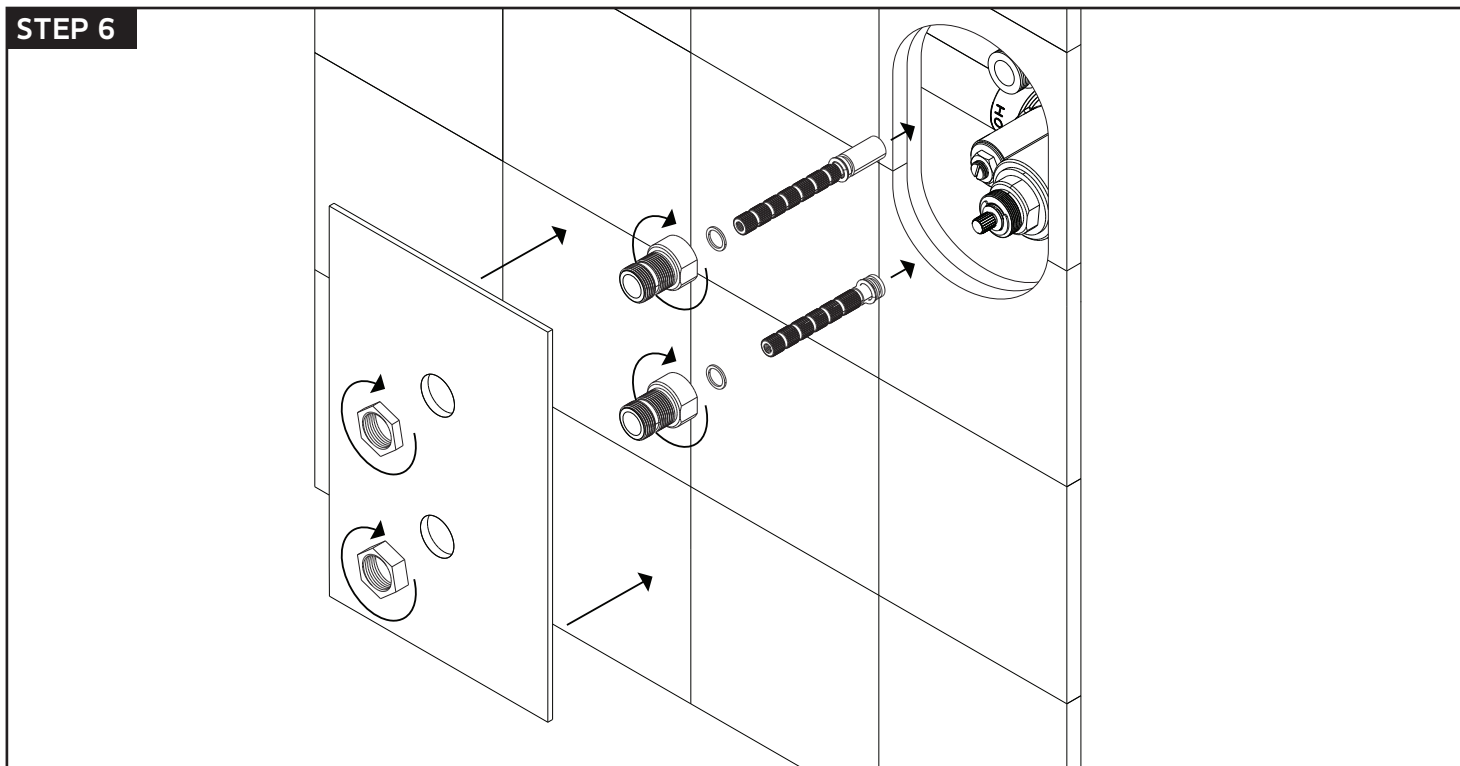
INSTALLATION STEPS

for F903B-60TK

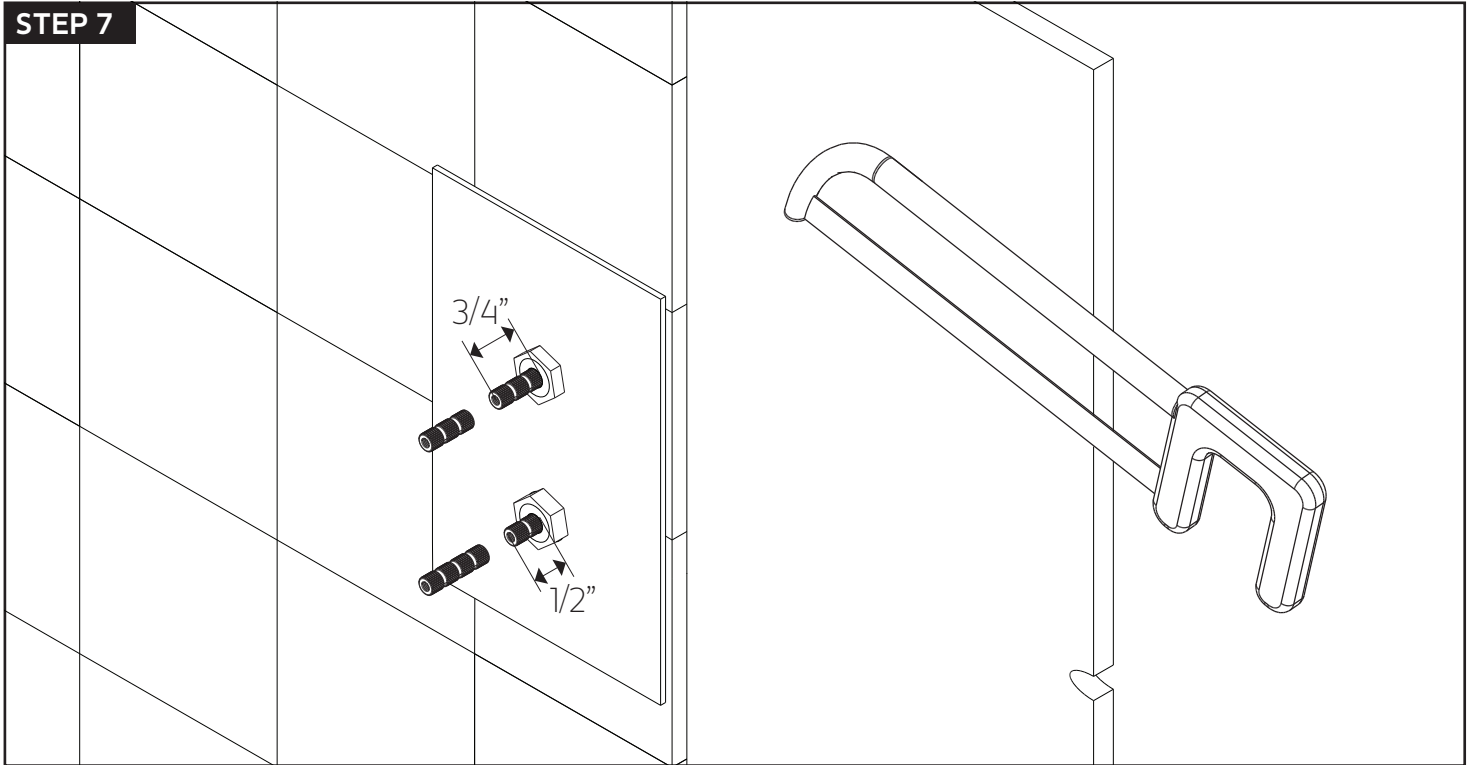
STEP 5



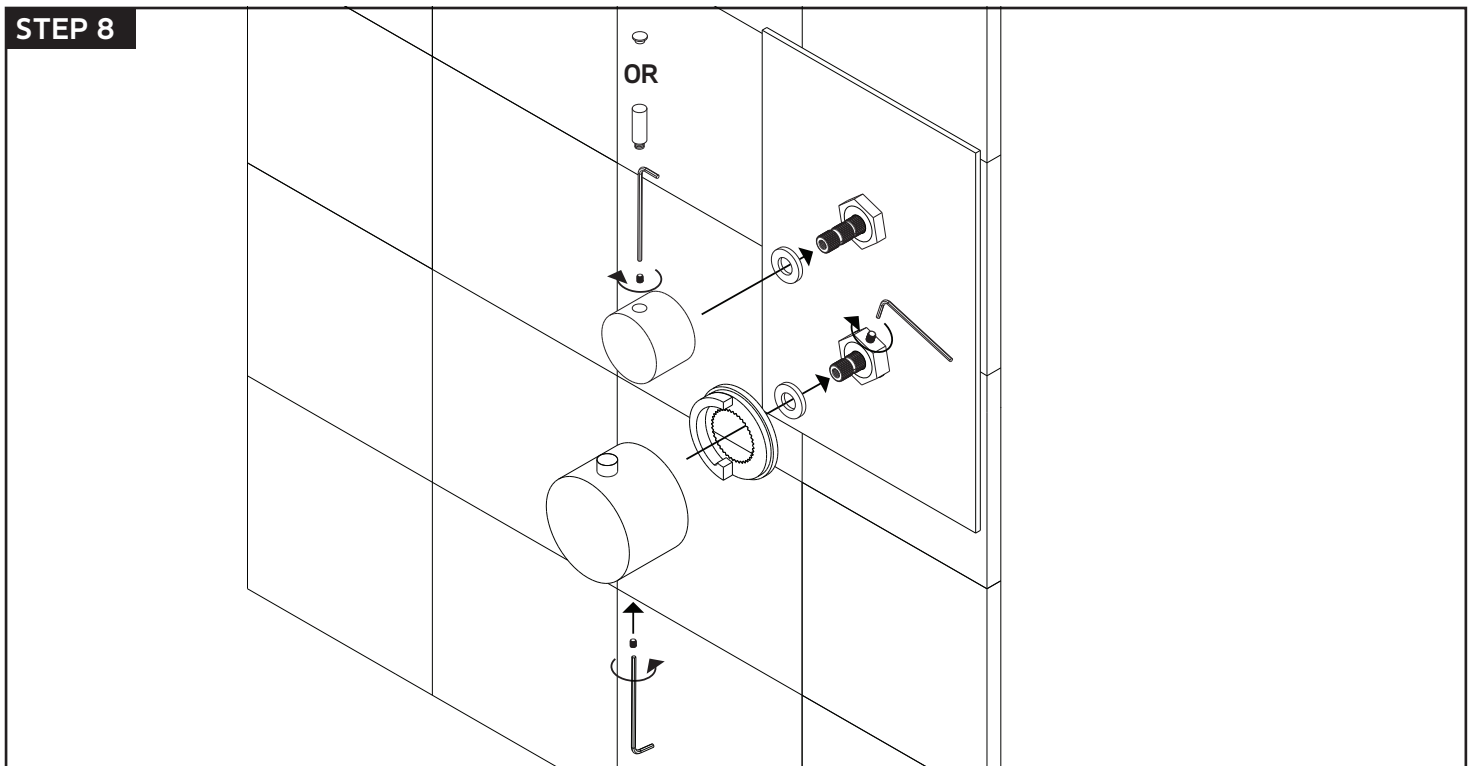
STEP 6

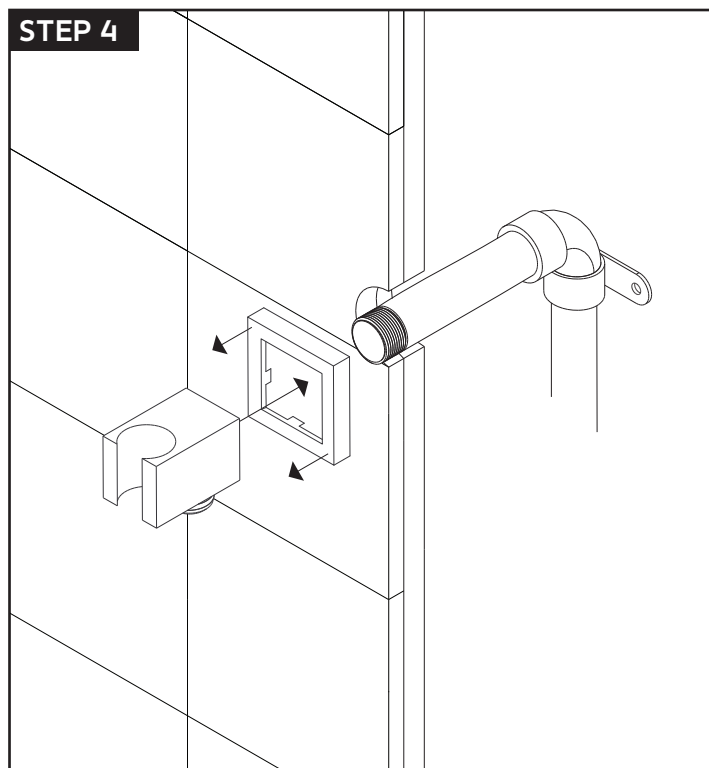
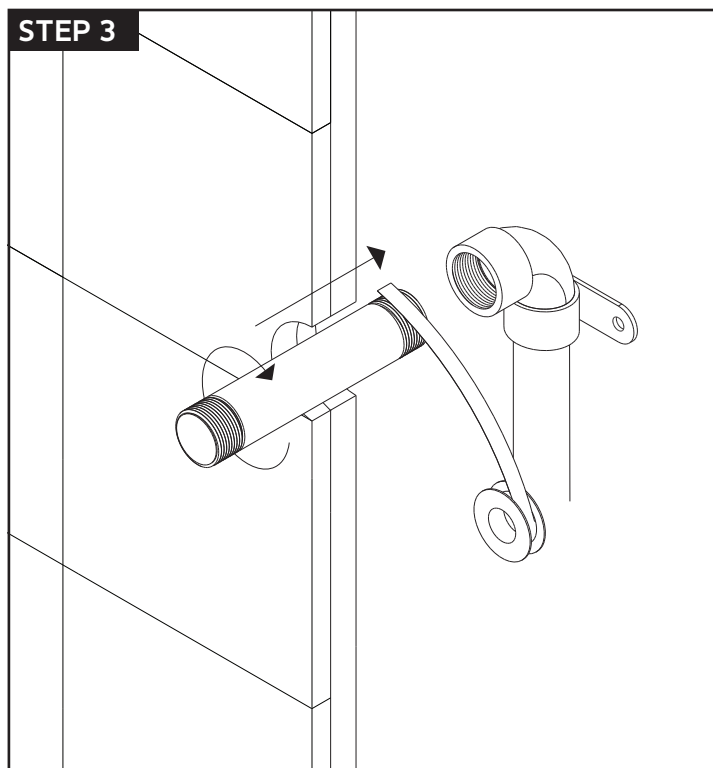
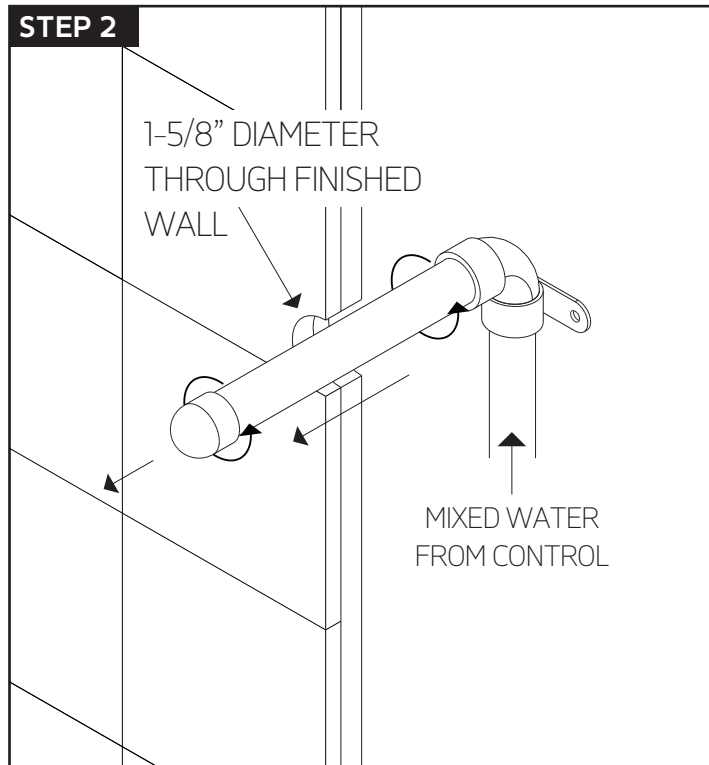
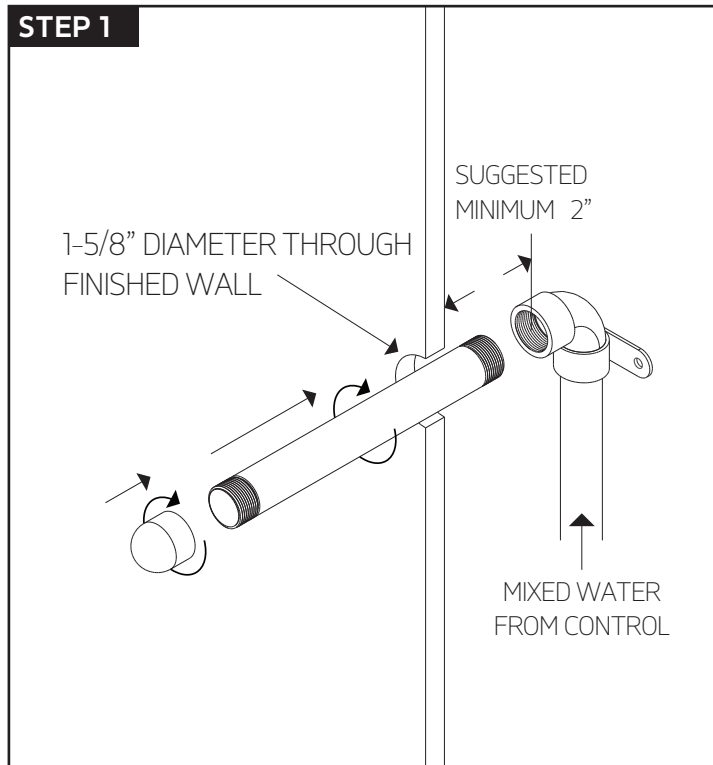


STEP 7



STEP 8

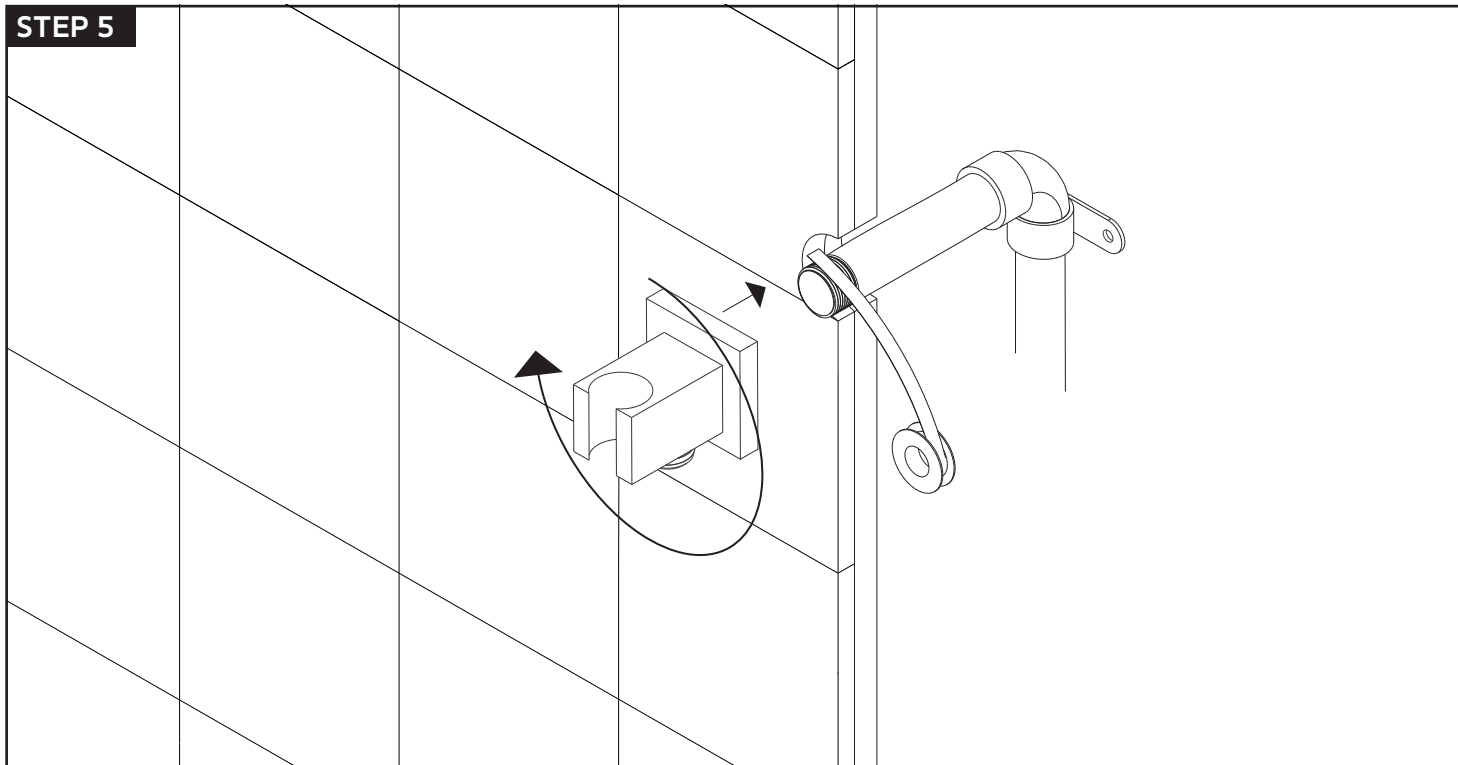




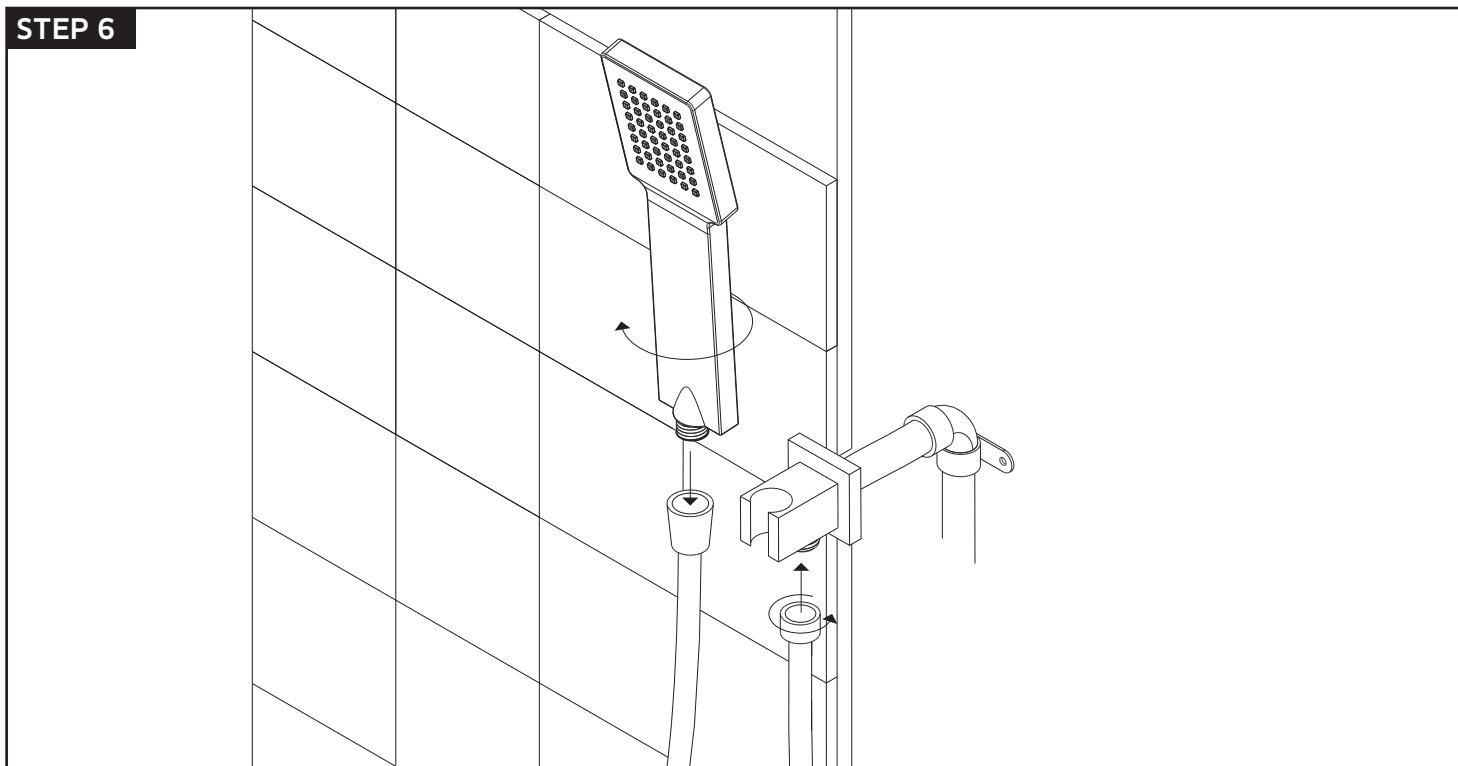
INSTALLATION STEPS

for F703-6

STEP 5



STEP 6



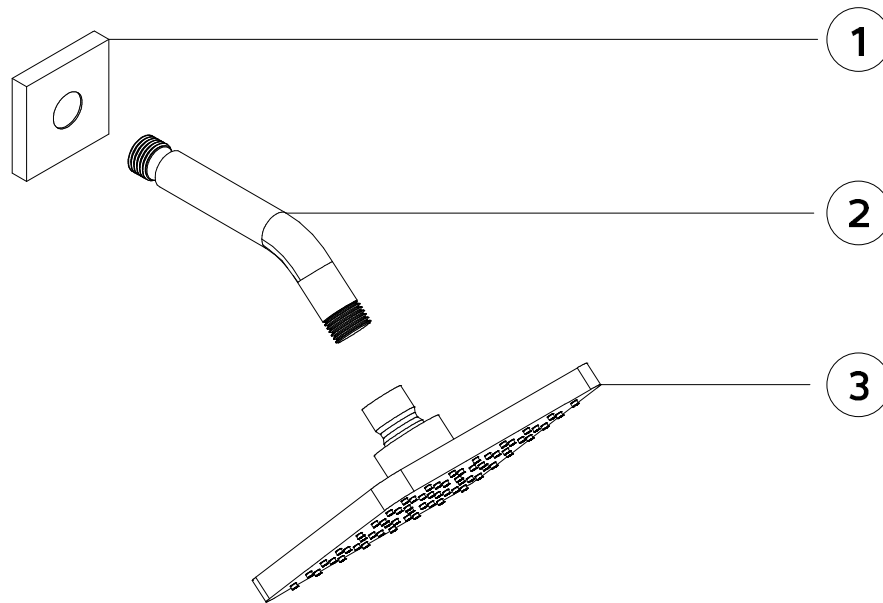
artos[®]

TS071

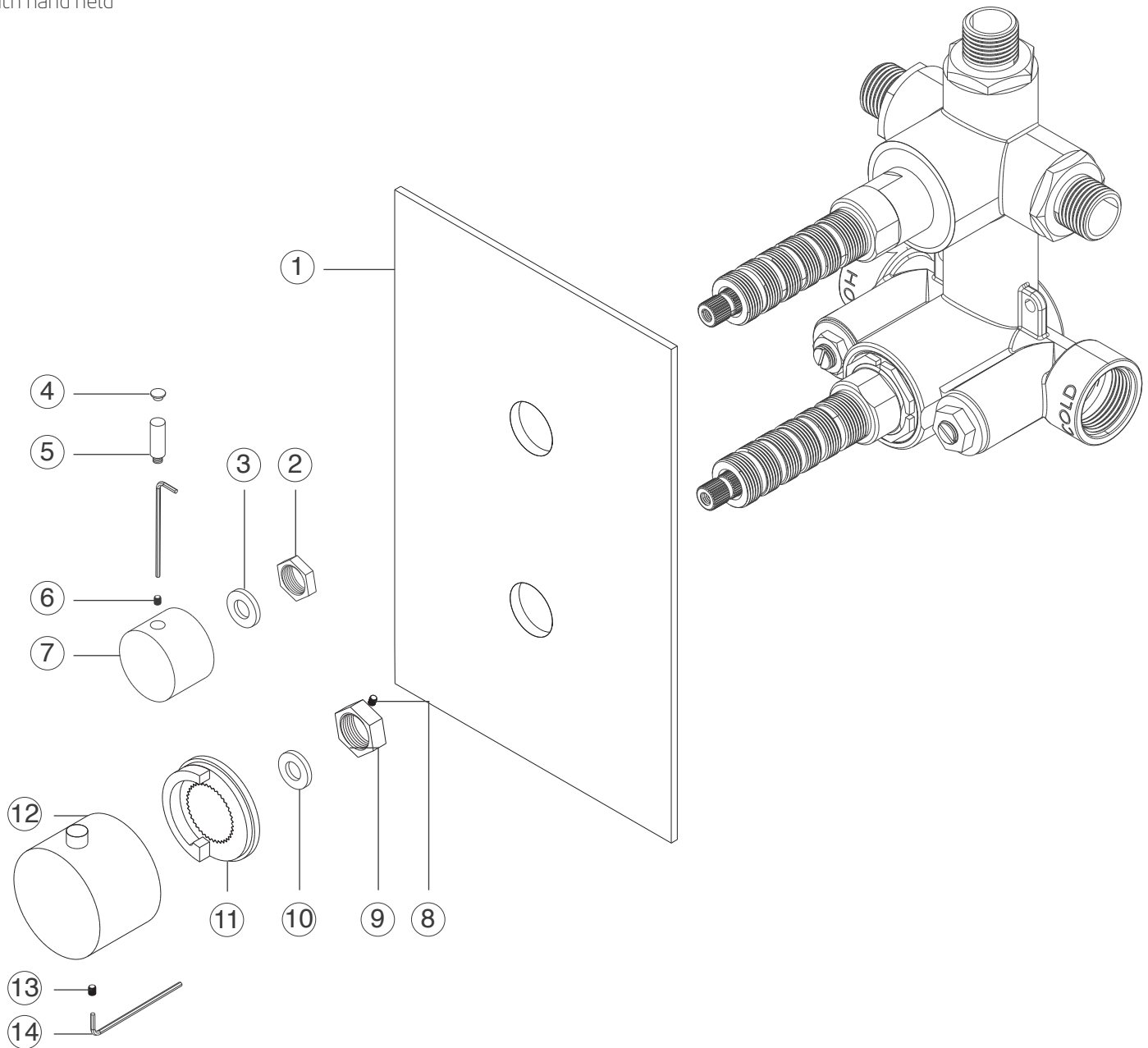
trova thermostatic shower set
with hand held

PARTS BREAKDOWN

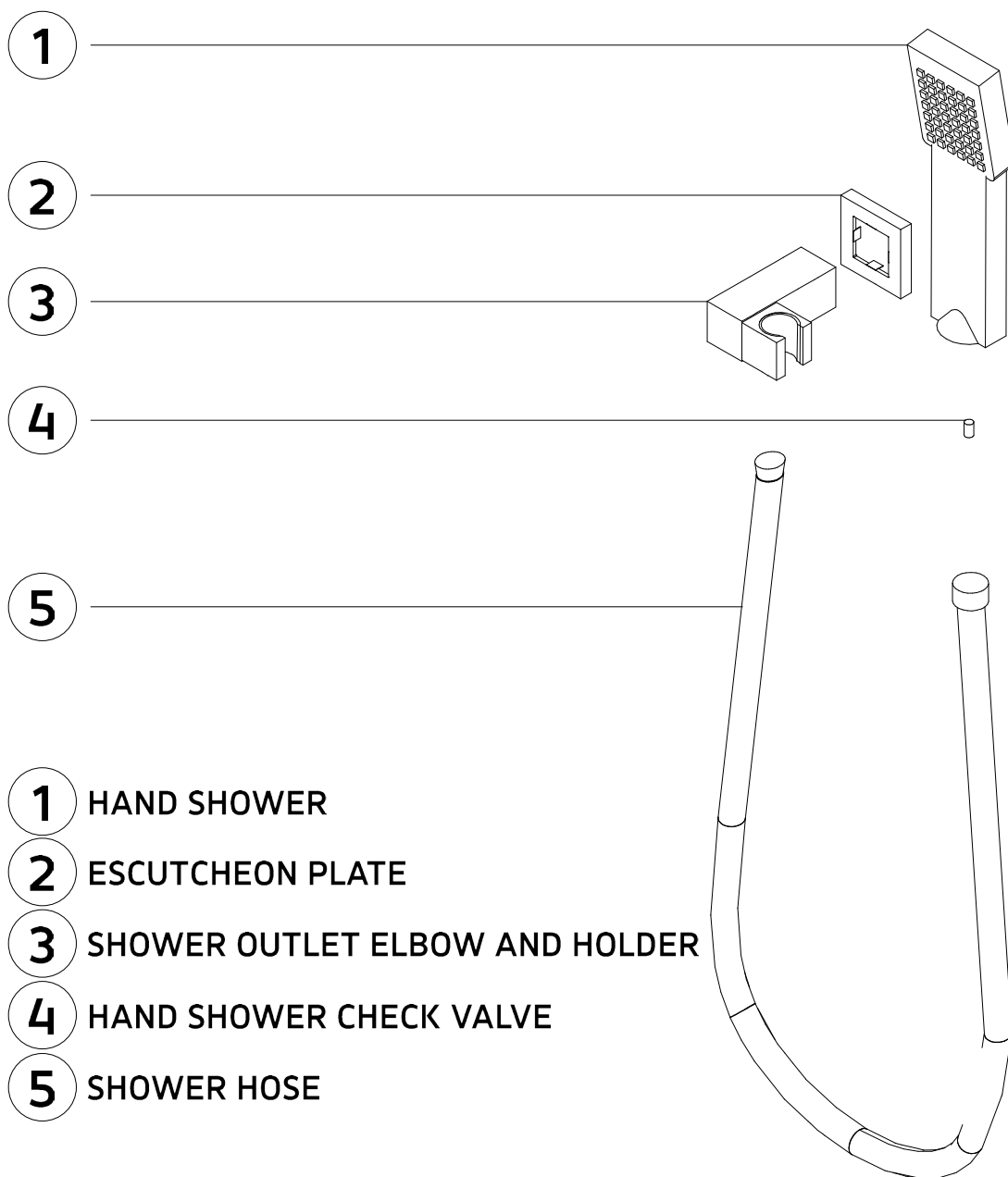
for shower head



- 1 SHOWER ARM ESCUTCHEON
- 2 SHOWER ARM
- 3 SHOWER HEAD



- | | |
|------------------------|-----------------------------|
| ① ESCUTCHEON | ⑧ LOCKING NUT SET SCREW |
| ② DIVERTER LOCKING NUT | ⑨ THERMOSTAT LOCKING NUT |
| ③ NYLON WASHER | ⑩ NYLON WASHER |
| ④ HANDLE HOLE CAP | ⑪ TEMPERATURE LIMITING RING |
| ⑤ DIVERTER HANDLE LEVE | ⑫ THERMOSTAT HANDLE |
| ⑥ DIVERTER SET SCREW | ⑬ THERMOSTAT SET SCREW |
| ⑦ DIVERTER HANDLE | ⑭ ALLEN WRENCH |



- 1** HAND SHOWER
- 2** ESCUTCHEON PLATE
- 3** SHOWER OUTLET ELBOW AND HOLDER
- 4** HAND SHOWER CHECK VALVE
- 5** SHOWER HOSE